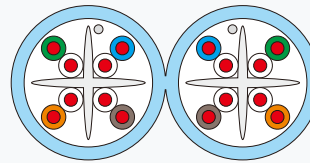
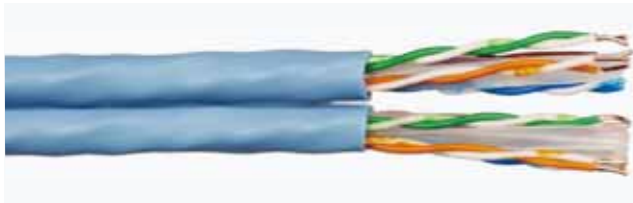


UTP Cat6 Dual



Technical data

- Temperature range(°C): -40 to 70
- Velocity ratio(%): 72
- Characteristic impedance:
(From 1 to 250 MHz) 100 ± 15 Ohm
- Bending radius (min.): 8 x cable diameter
- Flame retardancy: CMP, CMR, CMG, CM
- UL file number is E334179

Standards and performances

- IEC 61156-5 Edition 2.0
- En 50288-6-1
- EIA/TIA 568-B.2-1 – Cat 6
- ISO 11801 Edition 2 – CLASS E
- EN 50173 Edition 2 – CLASS E

Construction

Conductor (dia.mm)	23 AWG SBC 0.55
Insulation (dia.mm)	Solid PE 0.94
Filler	Cross member
Jacket (dia.mm)	PVC/LSZH 6.00 x 12.20
No. of pairs	4

